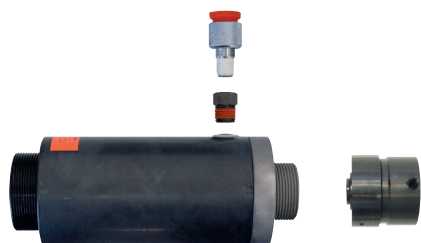


SERVICE PRICE LIST

Repair and overhaul by the GEDORE Automotive Service Centre

Hydraulic cylinder



KL-0040-1700

KL-0040-2200

KL-0040-2500

KL-0040-2800

Basic flat rate: **80.- €**

Includes fault analysis, cost estimate, disassembly/assembly of the cylinder

Repair: **62.- €**

Includes gasket renewal, cleaning and oiling of the cylinder

Further costs:

Includes further individual parts according to cost estimate

Internal-type spring compressor



KL-0025-100

KL-0025-200

KL-0033-100



Basic flat rate: **80.- €**

Includes fault analysis, cost estimate, disassembly/assembly of the spring compressor

Repair: **177.- €**

KL-0025-100 / KL-0025-200

Includes renewal of spindle with nut / drive and greasing of components

Repair: **85.50 €**

KL-0033-100

Further costs:

Includes further individual parts according to cost estimate

Outer spring compressor



KL-9002-100

KL-0015-100

KL-2000-100



Basic flat rate: **80.- €**

Includes fault analysis, cost estimate, disassembly/assembly of the spring compressor

Repair: **285.- €**

KL-9002-100

Includes renewal of spindle with bearing unit and greasing of components

Repair: **319.- €**

KL-0015-100

Repair: **276.56 €**

KL-2000-100

Further costs:

Includes further individual parts according to cost estimate

Spring holder



KL-9001-... Series

Basic flat rate: **15.- €**

Includes fault analysis, cost estimate, disassembly/assembly of the spring retainer

Repair: **18.85 €**

Includes renewal of locking bolts

Further costs:

Includes further individual parts according to cost estimate

SERVICE PRICE LIST

Spring preloading device



KL-0029-100 A

KL-0029-200

Basic flat rate: **40.- €**

Includes fault analysis, cost estimate, disassembly/assembly of the spring preloading device

Repair: **35.- €**

KL-0029-100 A

Includes renewal of left and right bearing unit

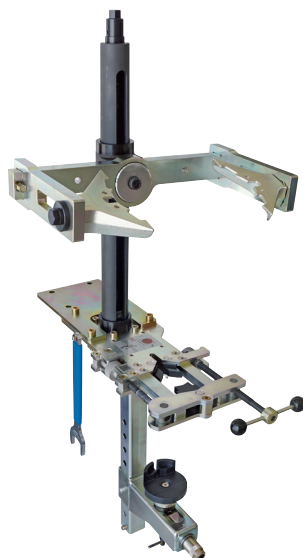
Repair: **18.85 €**

KL-0029-200

Further costs:

Includes further individual parts according to cost estimate

Stationary spring compressor



KL-5501

KL-5501 B

Basic flat rate: **120.- €**

Includes fault analysis, cost estimate, disassembly/assembly of the spring compressor

Further costs:

Includes further individual parts or additional assembly work according to cost estimate.

Order form

Company / department

Article number

Contact person

Serial number

Street / house number

Number

Postcode / city

Error description

Phone

.....

E-mail

.....

.....

.....

Service price list valid for maintenance work beyond warranty or guarantee.
Warranty claims are excluded without a delivery note/purchase receipt and must be submitted to the specialist dealer.

All information and prices are subject to typographical and printing errors.
All prices quoted are exclusive of VAT and freight costs.